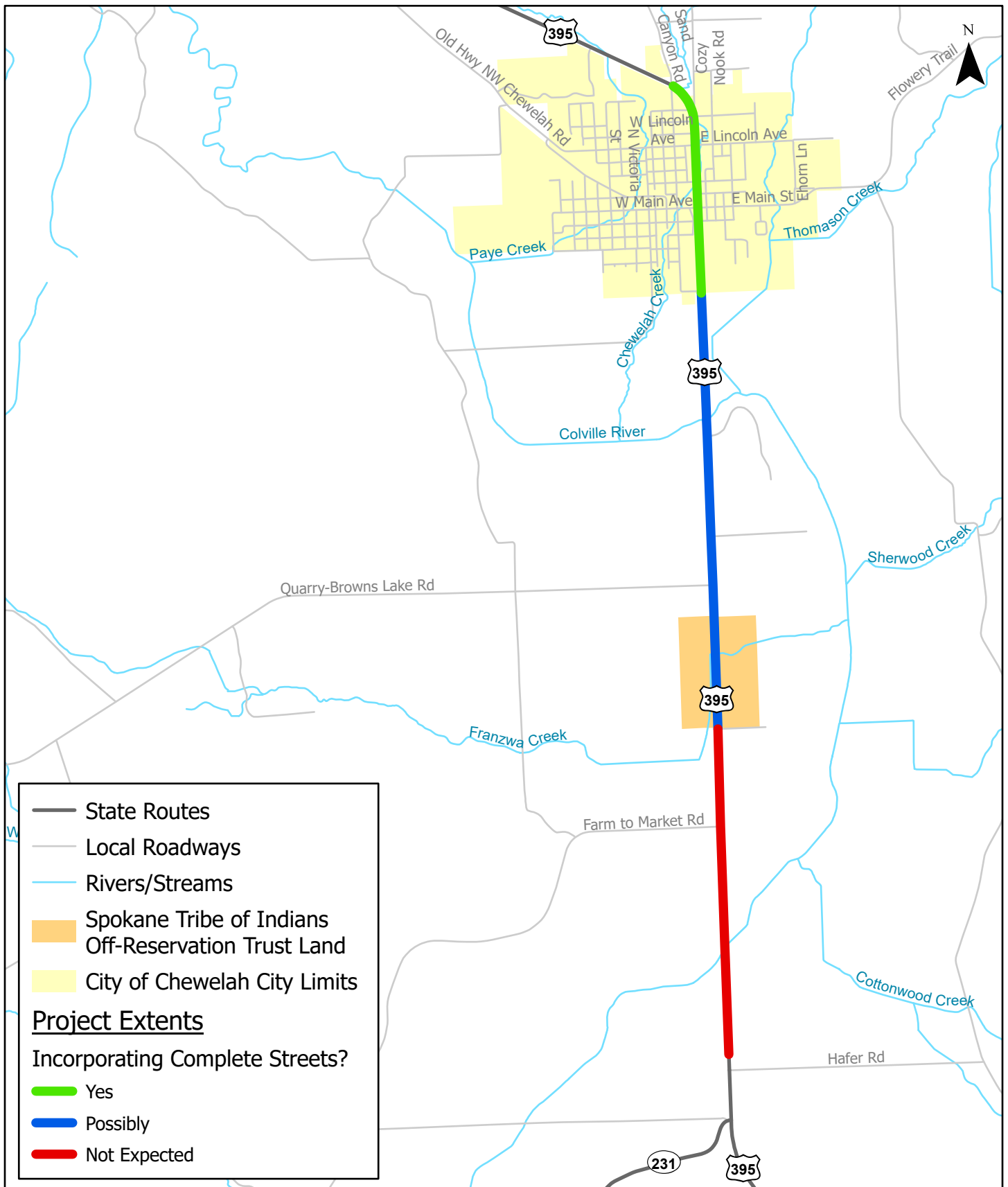


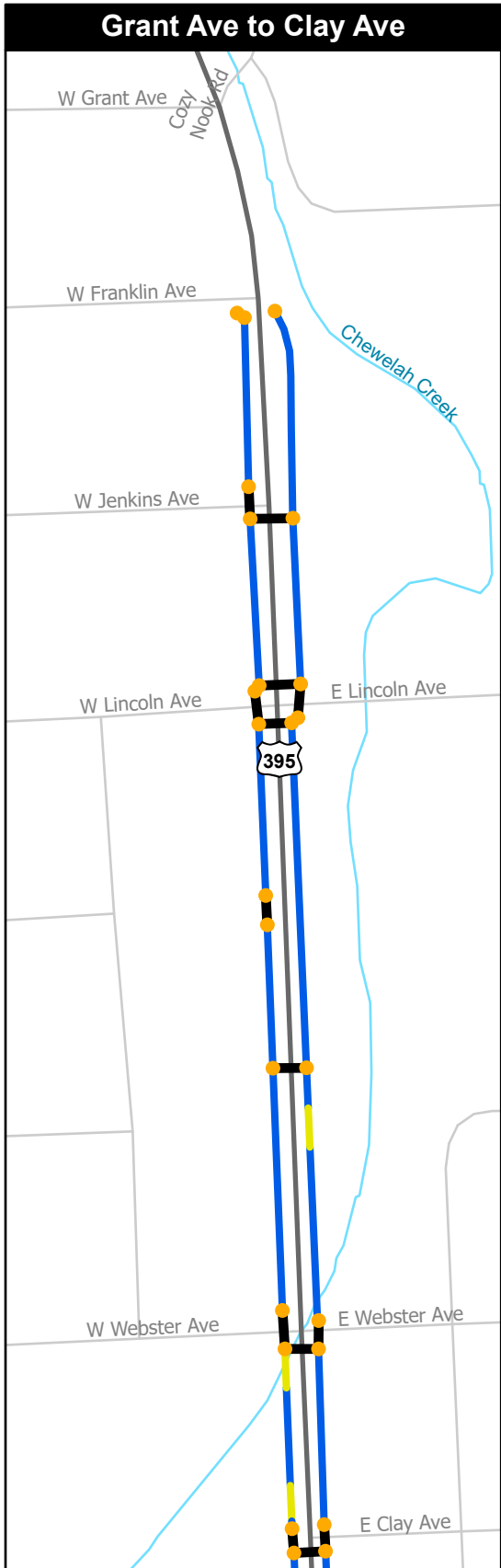
US 395 - Hafer Rd to Chewelah - Paving

Complete Streets Project Limits - 6/1/2023



US 395 - Hafer Rd to Chewelah - Paving

Complete Streets Analysis - Active Transportation Facilities



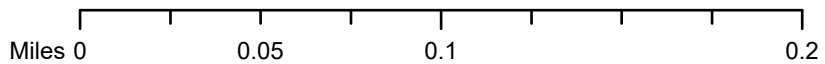
- State Routes
- Local Roadways
- Rivers/Streams
- Curb Ramps
- Crosswalks

Sidewalks

- Standard
- Substandard

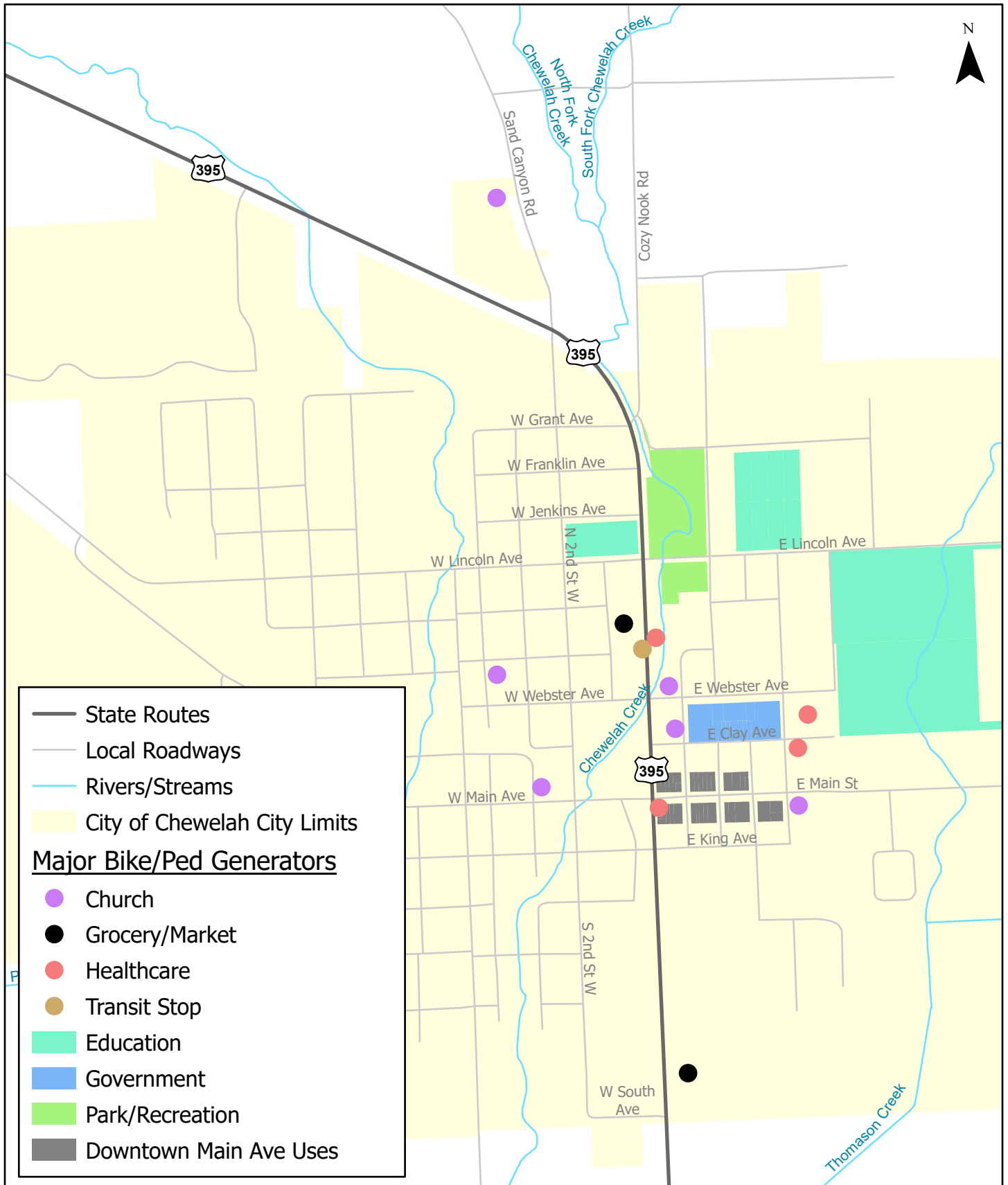
Controlled Crossings

- ◆ Traffic Signal



US 395 - Hafer Rd to Chewelah - Paving

Complete Streets Analysis - Major Bike/Ped Generators



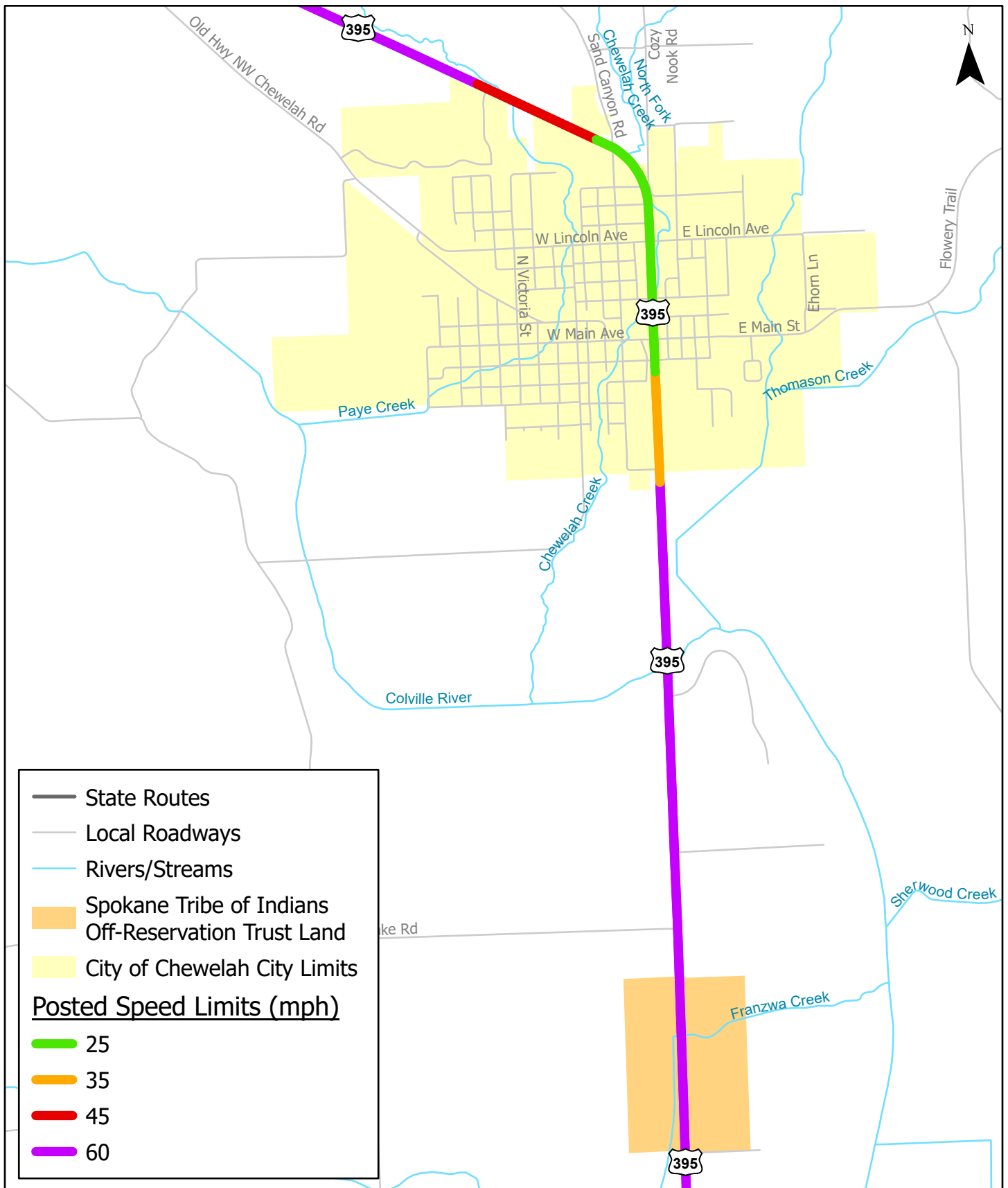
US 395 - Hafer Rd to Chewelah - Paving

Complete Streets Analysis - Right of Way Widths in Chewelah



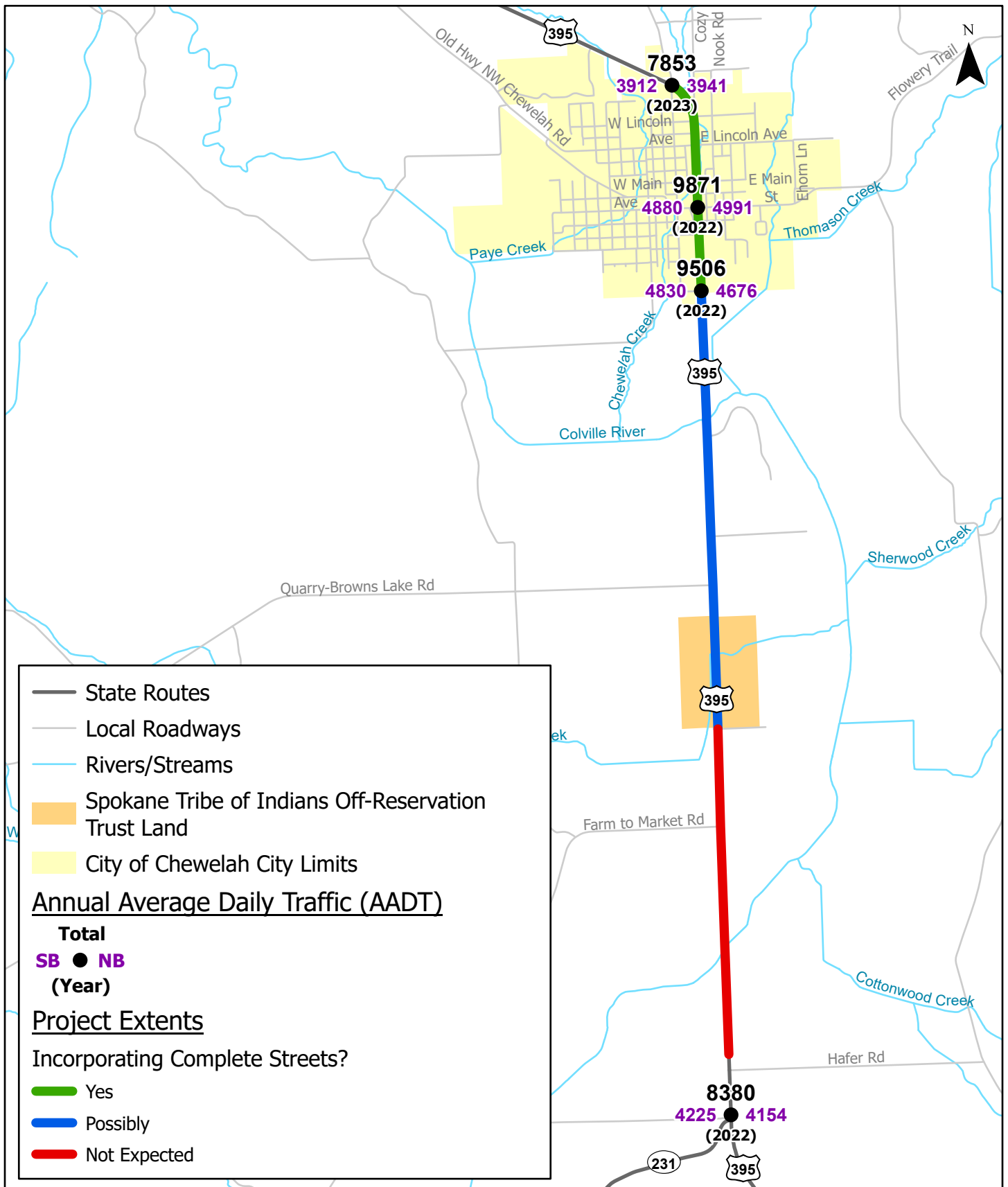
US 395 - Hafer Rd to Chewelah - Paving

Complete Streets Analysis - Posted Speed Limits



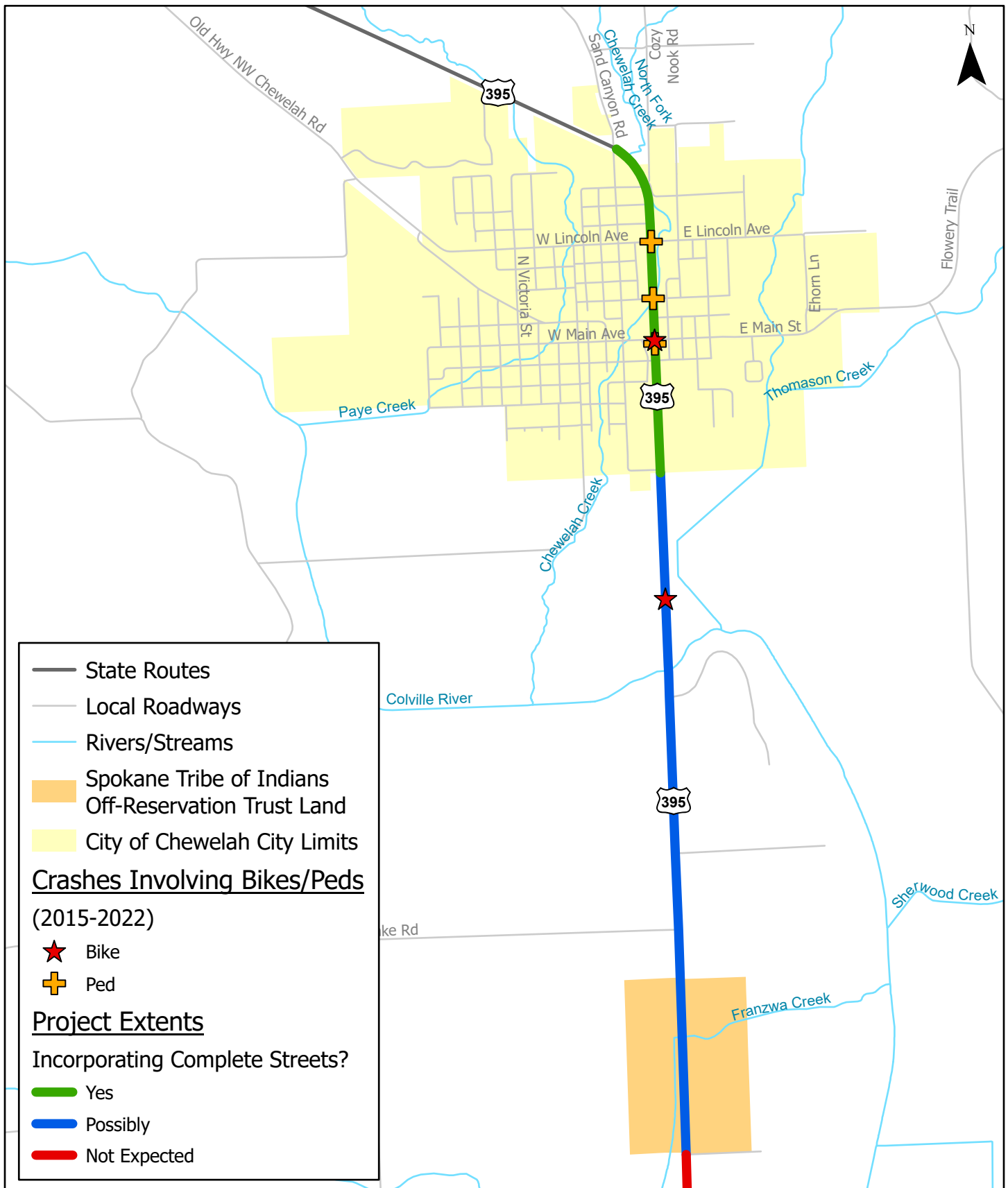
US 395 - Hafer Rd to Chewelah - Paving

Complete Streets Analysis - Posted Speed Limits



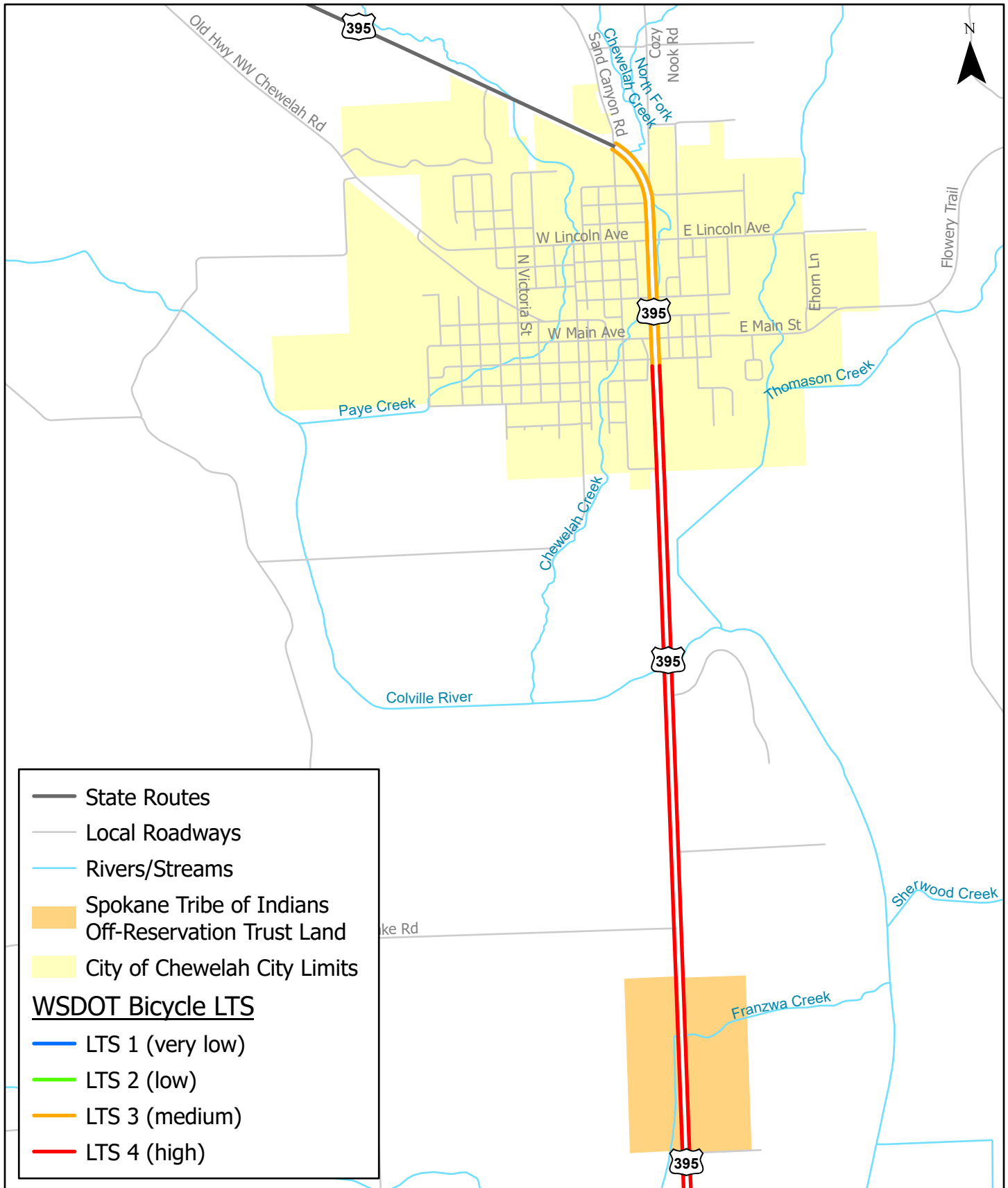
US 395 - Hafer Rd to Chewelah - Paving

Complete Streets Analysis - Crashes Involving Bikes/Peds (2015-2022)



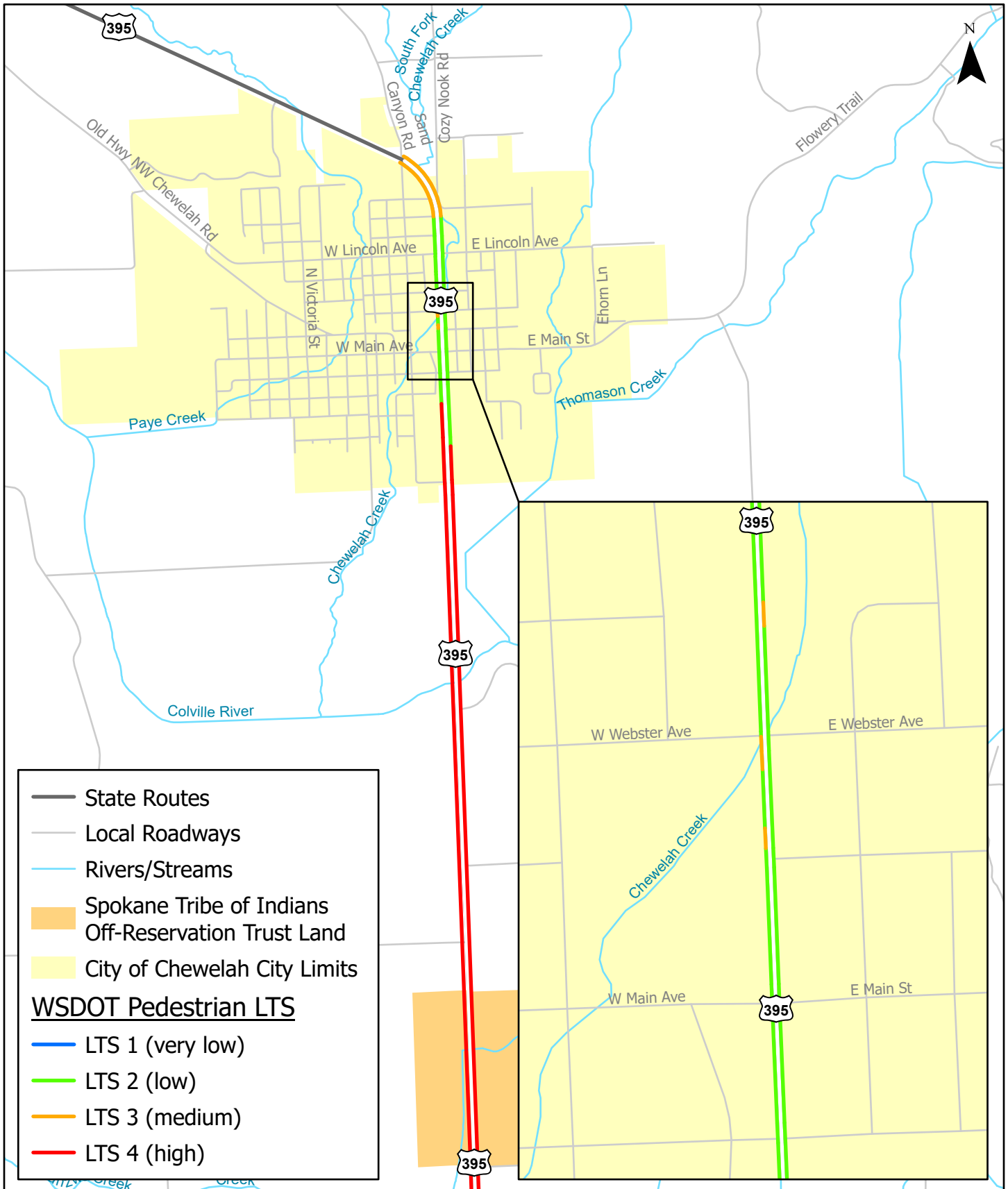
US 395 - Hafer Rd to Chewelah - Paving

Complete Streets Analysis - Existing Bicycle Level of Traffic Stress (LTS)



US 395 - Hafer Rd to Chewelah - Paving

Complete Streets Analysis - Existing Pedestrian Level of Traffic Stress (LTS)



US 395 - Hafer Rd to Chewelah - Paving

Complete Streets - Preliminary Strategies

